



## ACTON TECHNOLOGY PTE LTD

11 Woodlands Close, #09-27 Woodlands 11, Singapore 737853  
Phone:+(65) 6684-2013 Fax:+(65) 6684 2011 [www.acton-tech.com](http://www.acton-tech.com)  
Email: [acton@acton-tech.com](mailto:acton@acton-tech.com)

## Franchised Lines

## Electronics Components

### Passive



- Tantalum/Film/Ceramic
- Aluminum Electrolytic
- Polymer Aluminum
- Sensors
- Supercapacitors
- EMI Cores
- AC Line Filters
- Power Inductors
- Dual Mode Choke
- Flex Suppressors
- Antenna Solutions
- Signal Transformers
- Switch Mode Transformers
- Network Connectors
- RF & DSL Filters
- Power Inductors
- Gate Drive Transformers
- Current Sense Magnetics
- Common Mode Chokes
- Automotive Products



- Aluminum Electrolytic
- Film Capacitors
- Metal Oxide Varistor
- Resistive Product Solutions
- SMD, Leaded and Wirewound Resistors
- Varistors and Inductors

### Mechanical and PCB Hardware



- Stainless Screws
- Nuts and Bolts
- SEMS Screw
- Springs & Washers



- Wire Management
- Precision Plastic Fasteners
- Automotive Plastic Clips
- Nylon PCB Hardware
- Bump-on and Footings
- Stand-offs
- Tubing



### Electro-Mechanical



- EMI Solutions
- Thermal Interface Mats
- Precision Metal Stamping
- Ferrite Chip Ind.
- Power Inductors
- Com Mode Chokes
- Ferrite Components



- Connectors
- Cable Assy
- Relays, Contactors & Switches
- Terminals and Splices
- Fiber Optics
- Connectors
- Cable Assy
- Optics



- Power Relays
- ATE Relays
- Signal Relays
- Mosfet Relays
- Switches & Connectors
- EMI Shielding
- Thermal Interface Mats
- LCD Display Protection and Enhancement
- Engineered Plastic Solutions



- Test Fixture Probes
- Cable Assy
- Connectors
- Optical Transceivers
- RF-MW-MMW
- Semiconductor Test



- Automotive
- Slot / Edge Card
- CPU Socket
- I/O Connectors
- Cable Assy
- Battery Connector
- RF Components
- RF Interconnects
- Wired Connectivity
- Wireless Connectivity
- Optical Components

**“Able to source for other brands of products upon request ”**



## ACTON TECHNOLOGY PTE LTD

11 Woodlands Close, #09-27 Woodlands 11, Singapore 737853  
Phone:+(65) 6684-2013 Fax:+(65) 6684 2011 [www.acton-tech.com](http://www.acton-tech.com)  
Email: [acton@acton-tech.com](mailto:acton@acton-tech.com)

## Franchised Lines

## Electronics Components

### Active & Discrete



- Power Management
- Power Modules
- Battery Management
- Motor Drivers
- Automotive



- LED Lighting, COB, UV Flash, Auto, SMD
- Infrared LED, Modules, Optical Switch
- Photo Coupler



- Voltage Reference
- Voltage Regulators
- Op-Amps and Comp
- Converter / Controller
- Logic



- Illumination LEDs
- Auto, Consumer, Industrial LEDs
- Emitter, Lasers, Sensors



- Quartz Crystals
- Oscillators
- Ceramic Resonators



- Crystal Unit
- Crystal Oscillator
- VCXO / TCXO / OCXO
- QCM



- Motion , Environmental, Smart Sensors
- Optical Microsys



- 5G, 4G, 3G, 2G IoT Module
- LPWA IoT Module
- Wifi & Smart IoT Module
- GNSS IoT Module

### Other Brands



**“Able to source for other brands of products upon request ”**



## ACTON TECHNOLOGY PTE LTD

11 Woodlands Close, #09-27 Woodlands 11, Singapore 737853  
Phone:+(65) 6684-2013 Fax:+(65) 6684 2011 [www.acton-tech.com](http://www.acton-tech.com)  
Email: [acton@acton-tech.com](mailto:acton@acton-tech.com)

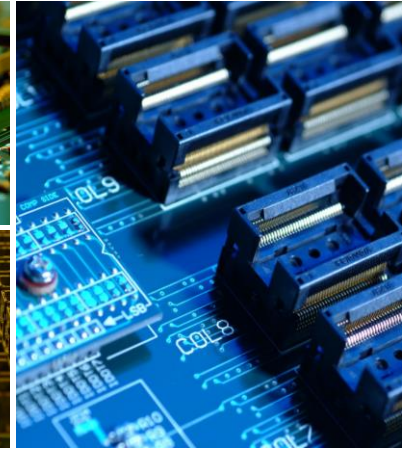
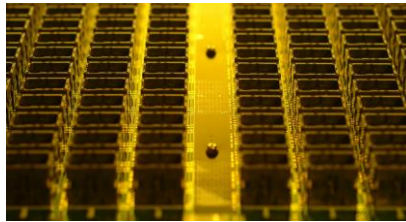
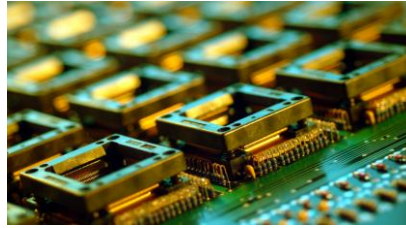
## Franchised Lines

## Semiconductor Test and Assembly



### ESA ELECTRONICS PTE LTD

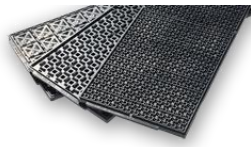
- Burn-in Boards & Burn-in Sockets
- Test During Burn-in (TDBI) Boards
- Life Test Boards
- HAST Boards
- Humidity Test Boards
- Systems Driver Boards
- Burn-in Board Backplanes
- Board Design & Rev Eng'g Services



### RIKA DENSHI



- Contact Probes
- Ball Wires
- Test Socket & Contactors
- Precision Tooling



- Carrier Tapes
- IC Tray
- Chip Tray

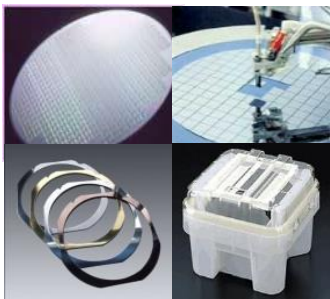
### smiths interconnect

- Board Test Fixture Probes
- Semiconductor Test
- Connectors
- Cable Assy & Harnesses
- RF-MW-MMW Components



- Wipes
- Microfiber Tapes
- Non- Woven Rolls
- Industrial Rolls

## WAFER/CASSETTE, TRAYS & RINGS



- Silicon "Mirror" DW all Sizes
- Aluminized Wafers
- Patterned Wafers
- Custom Wafers
- Other Engineering Test Wafers
- 5" 6", 8" and 12" Wafer Frames
- Mounted Wafer Carriers/Cassettes



- Dicing Blades & Flanges
- Back Grinding Wheels
- Resinoid Hubless Blades

## Wide Range of Burn-in Socket Manufacturers



***"Able to source for other brands of products upon request"***

### Franchised Lines

### Equipment, Spares and Services

#### Ovens, T&R, PSA



ESA ELECTRONICS PTE LTD

- BIB Desoldering Machine
- Peel Strength Analyser
- AEHR – Burn-in Test System
- PPLU, Auto tray-to-tray,to-tube



#### ADVANCED CERAMIC PRODUCTS



- Porous Ceramic Chuck Table
- Ceramic Pick and Place Nozzles
- Wire bond Capillary
- Full customization and conversion to Ceramic

#### POWER SUPPLY



MAGNA-POWER

TDK-Lambda



SINPRO ELECTRONICS CO., LTD.

- Open Frame Power Supplies
- DC Electronic Loads

- Prog DC Power Supplies
- Power Modules
- DC-AC Inverters

#### SPARE PARTS

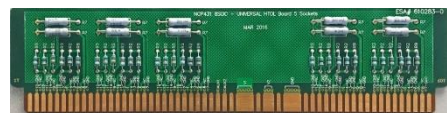
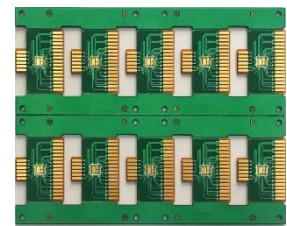


Physical Port Locks  
For Added Security  
Against Cyber Attack



#### PCB DESIGN / MFG SERVICES

- Prototyping / Quick Turn Capability
- Schematic and BOM provided Design to PCBA
- Board Design & Rev Eng'g Services
- Program Cards
- Mounting Boards
- Buffer Cards
- Relay Modules



***“Able to source for other brands of products upon request ”***



## ACTON TECHNOLOGY PTE LTD

11 Woodlands Close, #09-27 Woodlands 11, Singapore 737853  
Phone:+(65) 6684-2013 Fax:+(65) 6684 2011 [www.acton-tech.com](http://www.acton-tech.com)  
Email: [acton@acton-tech.com](mailto:acton@acton-tech.com)

## About Us

Acton Technology PTE. LTD. was founded March 2008. Since then, we have expanded and established our presence in Singapore, Philippines, Thailand and Vietnam. We have achieved this by continuously providing our customers with quality products and services.

As a fast-growing distributor of electronic components, hardware supplies, semiconductor test and equipment and test consumables, Acton represents several reputable and well-known manufacturers worldwide. In close coordination with our suppliers, we are able to get customers up-to-date on new product development and market trends.

Our competitive edge lies in working closely with customers in providing them superior materials planning and procurement strategies. We were able to attain this because of more than a decade combined experience of our staff in supply chain management. Warehouses strategically located in Singapore, Philippines, Hong Kong and Taiwan allows us fast and cost efficient deliveries to customers.

**“Contact your local Acton Representative and we would be happy to assist you”**

## Services

### Sales & Marketing Services

- Localized experienced Sales & Marketing Team
- Dedicated Program Team to handle & support key accounts
- Focused Product Managers and Application Engineers to provide best solution to customer needs
- Able to support customers with multi-site production

### Supply Chain Capabilities

- Fully inter-linked web-based ERP system
- Real-time inventory check
- Hub / JIT program to fully support dynamic production requirements
- VMI / SMI program with global OEM

### Logistics Services

- Warehouse facilities in Singapore, Hong Kong, Taiwan, Malaysia & Philippines

### One-stop Products Solution

- Acton is evolving to create and offer solutions to meet our customers' growing demand. Equipped with technical know-how and with a wide range of products even for non-franchised lines, we also customize services and solutions based on our customers' need.
- Flexible on supporting complete chain of direct & indirect materials
- Wide coverage sourcing capability for leadtime and spot-buy requirements

## Locations

